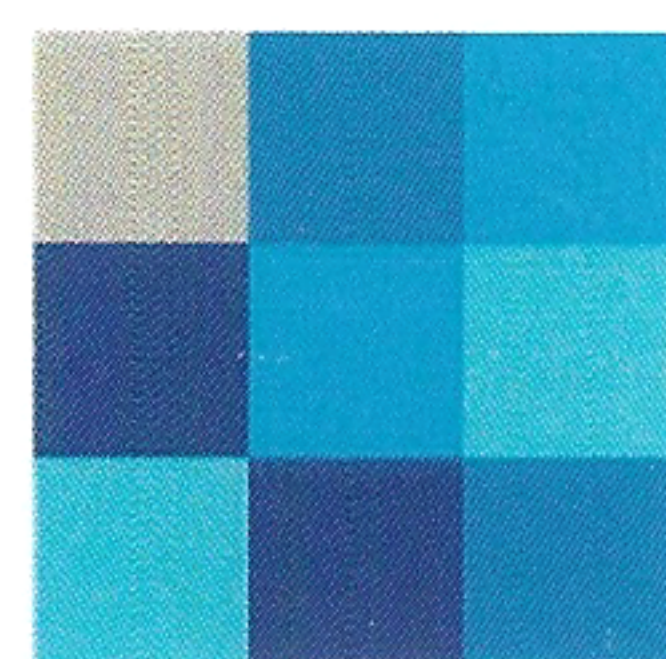


So the Loughton Lawn Tennis & Bowling Club came into being in 1937, the bowling green opening the following year, built at a cost of £625. It is interesting to note that around this time bowls fees were 3 Guineas (£3.15) for men and 2 Guineas (£2.10) for ladies. During the war years a special Forces membership of Half a Guinea (53p) was charged attracting locally based service personnel including members of the Royal Norwegian Air Force based at North Weald.

In 1960 considerable extensions and improvements were made to the clubhouse costing some £7000, the benefits of which we enjoy today.

Historically, bowling activity in the club had always been predominantly male orientated with a small ladies section. Waiting lists for membership were commonplace. However, recent years have brought about changes and today a "unisex" membership prevails.

The late 1990s saw a decline and dissolution of the tennis section, and in 2003 the club title changed to Loughton Bowling Club, which flourishes with a fine bowling green and clubhouse facilities, and we are proud of our ability to host and entertain County and Group matches along with our normal inter-club programme.



CHARTERHOUSE
VOICE & DATA plc

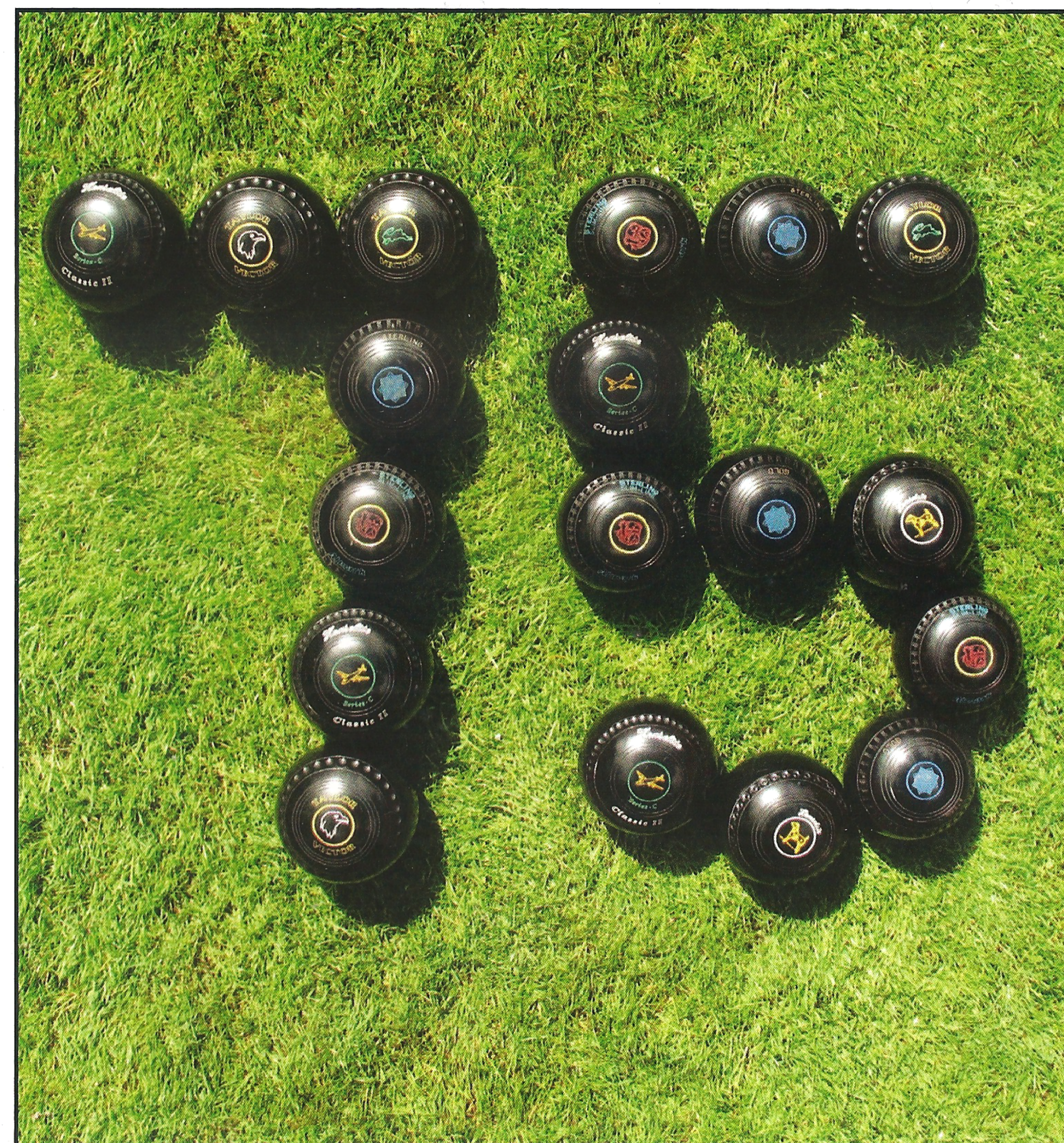
Loughton Bowling Club thank Charterhouse Voice & Data plc for their support

metloc printers ltd 020 8502 0236

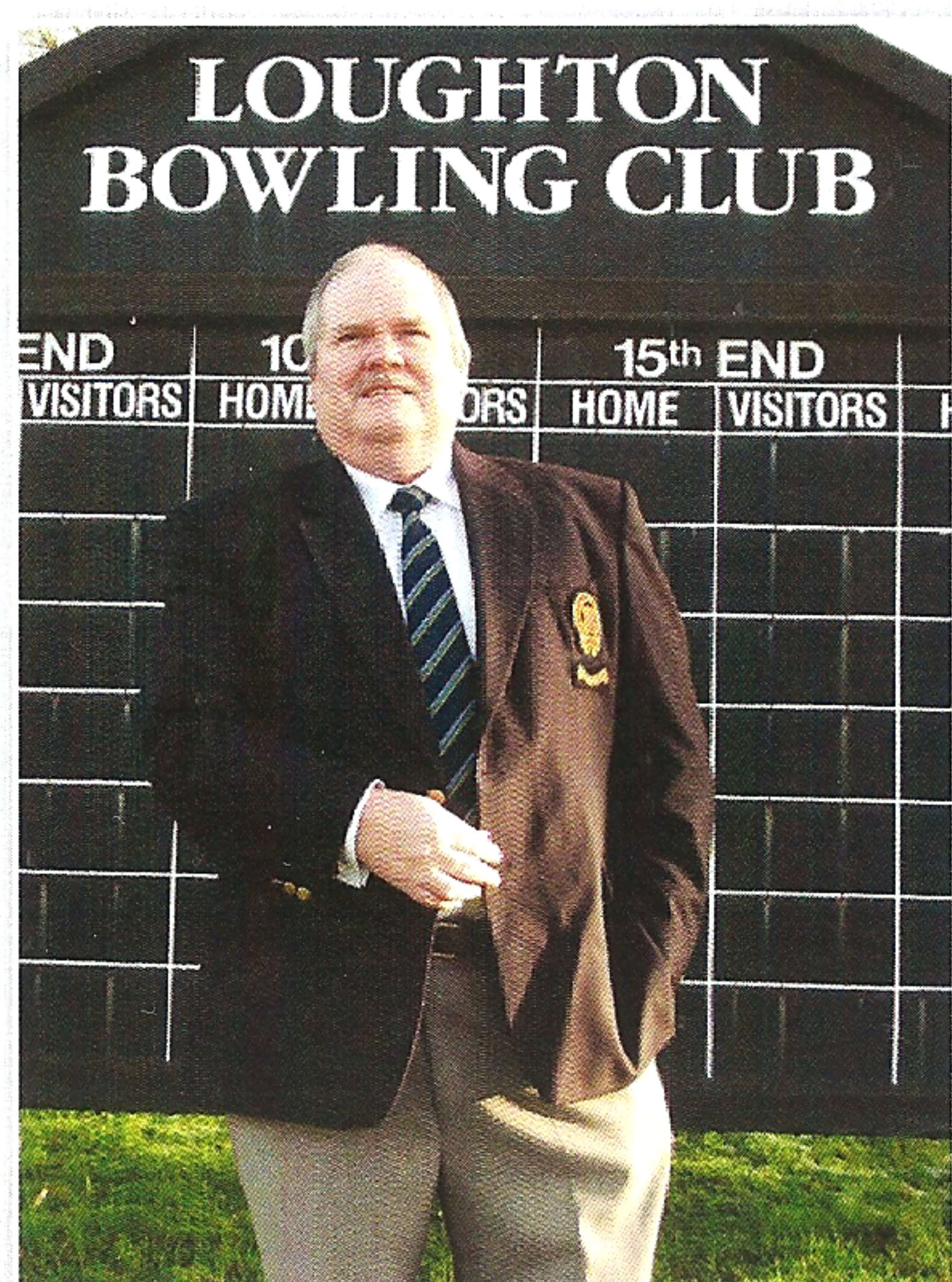
LOUGHTON BOWLING CLUB

1937-2012

THE SEVENTY FIFTH ANNIVERSARY



A FOREWARD BY THE PRESIDENT



I am very honoured to write this foreward as your President for this our 75th Anniversary, and coincidentally my 32nd year as a member. Throughout this time I have been privileged to be involved with others in the continued development of the club, to which many members past and present have made significant contributions for our benefit.

We have come a long way since the first days of the club and we have learnt a lot on our journey over the many years countless different people served on our various committees. They brought with them their knowledge, enthusiasm and expertise. Whilst they will not have always agreed there would have been frank and fruitful

discussions, our club has grown and we with it. Today I know we have a club we can all be proud of, I believe it offers the full package. A green that is second to none, and as such we are regularly requested to host county games for both the Mens and Ladies sections of the Essex Bowling Association, also the opportunity for our members to bowl at all levels and a club house open all year round for our bowls and social needs.

Togetherness is, I think, the secret of our success. As members together we have immense fun and laughter, and a great sense of achievement when things go right. However, when things go wrong we encourage each other and that friendship and support makes this club what it is today.

Celebrating anniversaries is a time to remember the past and look forward to the future, and so it is that we celebrate 75 years existence of this, the Loughton Bowls Club. Your various committees will have arranged special matches and events for our 75th year. I know everyone will do their utmost to ensure these are enjoyed to the full.

All my good wishes for a memorable 2012 and I look forward to being with you to participate in our celebrations.

Charles (Chuck) Pullen
President 2012, Loughton Bowls Club

A BRIEF CLUB HISTORY BY N BUCKLEY

Although we are celebrating the 75th Anniversary of our Club, it's origins go back much further - to 1906 in fact, when a group of well-to-do like minded people decided it was time that Loughton had a lawn tennis club. A site was rented in The Drive, Loughton and remained there until 1937, when local benefactors made a sizeable piece of ground available in Eleven Acre Rise (at the time called Ten Acre Rise!), where we are today.



The earliest photo of the Clubhouse, note dress code

Initially there was space for several tennis courts, and the establishment of a bowling green together with clubhouse etc. Much debate and thought was given to the layout to make best use of the ground available; whether to position the clubhouse in the centre of the tennis courts or, as

we know it, courts on one side and bowling green on the other. There was also a suggestion that a croquet lawn be provided as this would encourage ladies of more advancing years to play "who would be useful for providing teas etc. !" (Unfortunately this brilliant idea was not adopted).

Paid 8/7/44

Loughton Lawn Tennis & Bowling Club

To the Secretary,
Dear Sir,

I wish to join the above Club as a *Junior* member and as marked with a cross below.

*Senior Tennis (all the year)	£3 13 6
*Junior Tennis (all the year)	£2 12 6
Senior Tennis (mid week)	£2 12 6
Junior Tennis (mid week)	£1 11 6
Bowls	£3 3 0
Bowls (Ladies)	£2 2 0
Combined Bowls and Tennis	£4 14 6
Social	15 0
* Forces	10 6 *

Entrance Fees at present in force for *2012*

Section of *E*

Yours Faithfully,
J. W. HOMER

Name in block letters (Mr, Mess, Miss)
Address *R. E. ME*

Proposed by *J. P. Duffin*
Seconded by *H. R. Clark*
Date Elected *21/1/44*

Applicants for Tennis Section are elected for the duration of hostilities, or until such later date as may be decided by the Committee.

The following extract from the rules should be noted:
"The subscription of each new member together with entrance fee shall be paid before such member is allowed to use the Club."
*Full members are accepted subject to a playing-in test.
If under 19 please give date of birth.

TO THE
Loughton Lawn Tennis & Bowling Club

Date *20-5-43*

I wish to join the above Club as a *Junior* member and as marked with a cross below.

*Senior Tennis (all the year)	£3 13 6
*Junior Tennis (all the year)	£2 12 6
Senior Tennis (mid week)	£2 12 6
Junior Tennis (mid week)	£1 11 6
Bowls	£3 3 0
Bowls (Ladies)	£2 2 0
Combined Bowls and Tennis	£4 14 6
Social	15 0
* Forces	10 6 *

Entrance Fees at present in force for *2012*

Section of *E*

Yours Faithfully,
M. EIDENBOM

Name in block letters (Mr, Mess, Miss)
Address *A. N. E. North Weald*

Proposed by *J. P. Duffin*
Seconded by *H. R. Clark*
Date Elected *21/1/43*

Applicants for Tennis Section are elected for the duration of hostilities, or until such later date as may be decided by the Committee.

The following extract from the rules should be noted:
"The subscription of each new member together with entrance fee shall be paid before such member is allowed to use the Club."
*Full members are accepted subject to a playing-in test.
If under 19 please give date and year of birth.

The club proved a great respite for the Armed Forces. Here, two membership forms, one from AHD Eidenbom a member of the Norwegian Air Force, stationed at North Weald in 1943